

CONTINUING MEDICAL EDUCATION

Johns Hopkins School of Medicine
Division of Gastroenterology and Hepatology
present:



REGISTER NOW

Seventh Annual **HITEC** Hopkins International Therapeutic Endoscopy Course **2023**

August 24-25, 2023

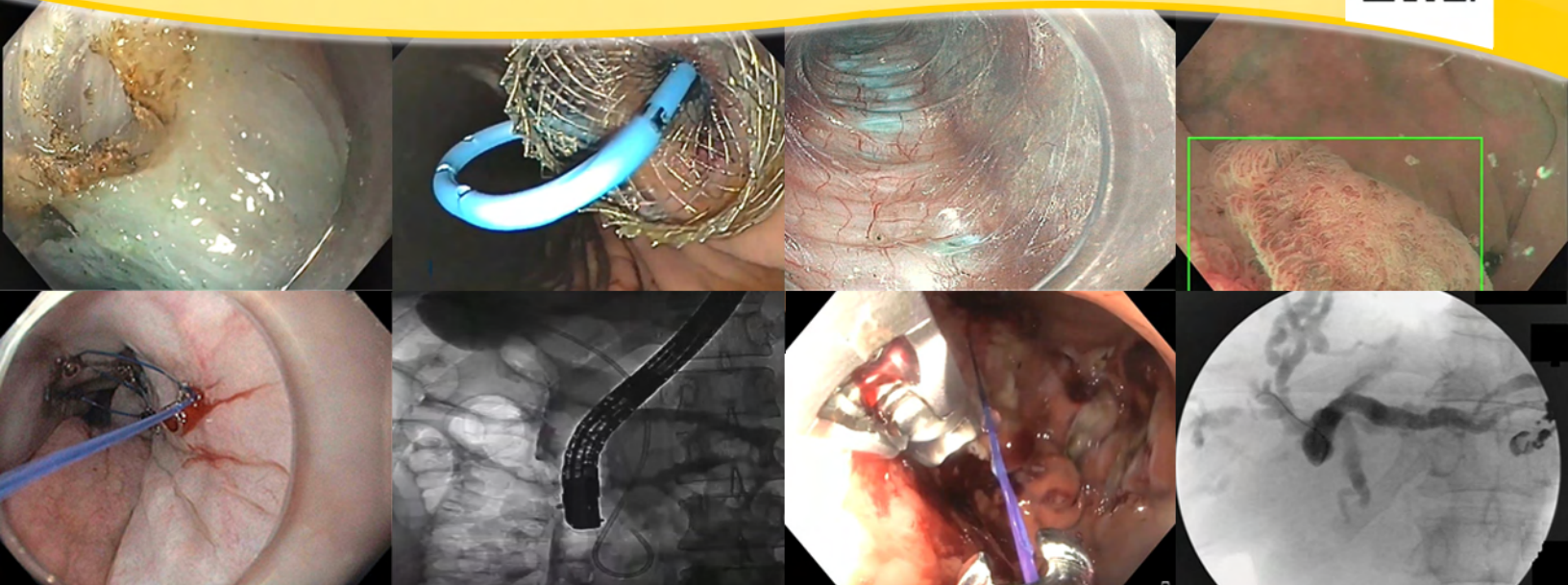
Course Directors:

Mouen Khashab, MD, MASGE

Saowanee Ngamruengphong, MD

Mary-Rose Hess, BSN, RN, CGRN

Chevy Chase Bank Conference Center
The Johns Hopkins Hospital
August 24, 2023 9:45 am - 5:00 pm ET
August 25, 2023 7:20 am - 5:00 pm ET



This activity has been approved for **AMA PRA Category 1 Credits™**.

- Comprehensive **2-day hybrid course** (virtual with an option of in-person attendance) dedicated to providing practicing gastroenterologists, endoscopists and endoscopy staff state-of-the-art updates on luminal and pancreatico-biliary diseases and endoscopy.
- HITEC is the **third-highest attended course in the U.S.** after Digestive Disease Week (DDW) and American College of Gastroenterology (ACG) Annual Scientific Meeting.
- The course is consistently attended by physicians from more than 100 countries.
- Full-day of **Live Endoscopy** from the Johns Hopkins Hospital and other centers of excellence around the world with **Live Spanish Translation**.
- **Free registration** for virtual attendance on Zoom and in-person attendance. We will also offer a Physicians Hands-on workshop for a \$100 fee.
- Concurrent **GI nurses and associates course**.
- Course faculty includes the **best educators and leaders** from around the world.
- Demonstrations of the **latest breakthroughs** in endoscopic procedures, equipment and accessories.
- Combination of live endoscopy, short didactic presentations, interactive discussions, and interactive video case presentations.

In short, **HITEC 2023** will feature a detailed illustration of the optimal techniques to enhance endoscopic skills for the management of various luminal and pancreatico-biliary diseases, and concurrently introducing advanced and novel procedures/techniques to endoscopists, trainees and endoscopy nurses and technicians from around the world. We look forward to your participation.



ONSITE REGISTRATION

Thursday, August 23, 2023 9:00 – 9:45 am ET
Friday, August 24, 2023 6:30 – 7:20 am ET

FEES

The Virtual Course on Zoom is free to all participants.

Physicians Hands-On Course
Register before 8/18/2023 - \$100
Register after 8/18/2023 - \$150

The registration fee includes the hands on course on **August 24, 2023**, instructional materials, continental breakfast, refreshment breaks and lunch.

METHOD OF PAYMENT

Learners must register and submit full payment prior to the start of the activity. On-site payments can only be accepted if made by learners via credit card through the online portal by 5:00 pm ET on the first day of the activity.

LATE FEE AND REFUND POLICY

A \$50 late fee applies to registrations received after 5:00 p.m. ET on August 18, 2023. A handling fee of \$50 will be deducted for cancellation. Refund requests must be received by fax or mail by August 18, 2023. No refunds will be made thereafter. Transfer of registration to another Johns Hopkins activity in lieu of cancellation is not possible.

You will receive a confirmation by e-mail. If you have not received it by August 18, 2023, call (410) 502-9636 to confirm that you are registered. A transcript of attendance will be available upon attestation of your credit hours and submission of the post activity online evaluation.

The Johns Hopkins University reserves the right to cancel or postpone any activity due to unforeseen circumstances. In this event, the University will refund the registration fee but is not responsible for travel expenses. Additionally, we reserve the right to change the venue to a comparable venue. Under such circumstances registrants will be notified as soon as possible.

LOCATION

Chevy Chase Bank Conference Center
The Sheikh Zayed Tower
The Johns Hopkins Hospital
1800 Orleans Street, Main Level
Baltimore, Maryland 21287

The Sheikh Zayed Tower is located on Orleans Street between Broadway and Wolfe Streets. Directions and campus parking information are available on our website under the Contact Us tab at <https://HopkinsCME.cloud-cme.com>. The closest garage is the Orleans Street Garage, which is located on Orleans Street (Route 40) between Wolfe Street and Broadway. Handicapped parking is also available in the McElderry Street Garage. Johns Hopkins is smoke free.



WHO SHOULD ATTEND

This activity is intended for Anesthesiology, Gastroenterology, General Surgery, Hepatology, Infectious Diseases, Internal Medicine, Nurse Anesthetist, Nurse Practitioner and Nursing.

OBJECTIVES

After attending this activity, the learner will demonstrate the ability to:

1. Discuss the latest advances in luminal and pancreaticobiliary endoscopy.
2. Discuss the latest advances in bariatric endoscopy.
3. Discuss different management options techniques for patients with complex colon polyps.
4. Present an update on POEM and other treatment options for patients with achalasia.
5. Illustrate techniques and indications for endoscopic suturing.
6. Demonstrate latest breakthrough procedures in diagnostic and therapeutic endoscopy.

ACCREDITATION STATEMENT

The Johns Hopkins University School of Medicine is accredited by the Accreditation Council for Continuing Medical Education (ACCME) to provide continuing medical education for physicians.



CREDIT DESIGNATION STATEMENT

The Johns Hopkins University School of Medicine designates this live activity for a maximum of 10.5 *AMA PRA Category 1 Credits™*. Physicians should claim only the credit commensurate with the extent of their participation in the activity.

OTHER CREDITS

American Nurses Credentialing Center (ANCC) accepts *AMA PRA Category 1 Credit™* from organizations accredited by the ACCME. Nurses can claim a maximum of 10.5 credits.

American Academy of Nurse Practitioners National Certification Program accepts *AMA PRA Category 1 Credit™* from organizations accredited by the ACCME.

American Board of Internal Medicine's (ABIM) Maintenance of Certification (MOC) Program

Successful completion of this CME activity, which includes participation in the evaluation component, enables the participant to earn up to 10.5 MOC points in the American Board of Internal Medicine's (ABIM) Maintenance of Certification (MOC) medical knowledge program. Participants will earn MOC points equivalent to the amount of CME credits claimed for the activity. It is the CME activity provider's responsibility to submit participant completion information to ACCME for the purpose of granting ABIM MOC credit.



POLICY ON PRESENTER AND PROVIDER DISCLOSURE

It is the policy of the Johns Hopkins School of Medicine that the presenter and provider globally disclose conflicts of interest. The Johns Hopkins School of Medicine OCME has established policies that will identify and resolve conflicts of interest prior to this educational activity. Detailed disclosure will be made prior to presentation of the education.



SYLLABUS AND LOG IN INFORMATION

The syllabus and zoom webinar link will be accessible online and via your mobile device in the CloudCME App one week prior to the activity start date. To access, please visit our website.

CME Website: <https://hopkinscme.cloud-cme.com>
(Sign In, Click My CME tab, Click Syllabus)

HOW TO OBTAIN CREDIT

Post activity, an online evaluation will be available to attendees to evaluate the activity and individual presentations and to identify future educational needs. Upon completion of the evaluation, the learner must attest to the number of hours in attendance. Credits earned will be added to the learner's transcript and immediately available for print. The last day to access the evaluation and attest to your credits is **October 9, 2023**.

AMERICANS WITH DISABILITIES ACT

The Johns Hopkins School of Medicine fully complies with the legal requirements of the ADA and the rules and regulations thereof. Please notify us if you have any special needs.

The Johns Hopkins School of Medicine takes responsibility for the content, quality and scientific integrity of this CME activity.

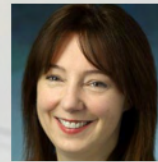
Register online at <https://www.hitec-course.com>





Venkata Akshintala, MD (USA)

Assistant Professor of Medicine
Program Director, Medical Pancreatology
Fellowship Associate Program Director
Therapeutic Endoscopy Fellowship
Division of Gastroenterology and Hepatology
Johns Hopkins University School of Medicine
Baltimore, Maryland



Anne Marie Lennon, MD, PhD (USA)

Professor of Medicine
Director, Division of Gastroenterology
and Hepatology
The Moses and Helen Golden Paulson Endowed Chair
Johns Hopkins University School of Medicine
Baltimore, Maryland



Haitham Al Grain, MD (USA)

Assistant Professor
Anesthesiology and Critical Care Medicine
Johns Hopkins University School of Medicine
Baltimore, Maryland



Zahra Maleki, MD, FCAP, MIAC (USA)

Associate Professor of Pathology
Johns Hopkins University School of Medicine
Baltimore, Maryland



Olaya Brewer Gutierrez, MBBS (USA)

Assistant Professor of Medicine
Division of Gastroenterology and Hepatology
Johns Hopkins University School of Medicine
Baltimore, Maryland



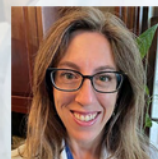
Saowanee Ngamruengphong, MD (USA)

Associate Professor of Medicine
Associate Director, Gastroenterology and
Hepatology Fellowship
Division of Gastroenterology and Hepatology
Johns Hopkins University School of Medicine
Baltimore, Maryland



Marcia Canto, MD, MHS (USA)

Professor of Medicine and Oncology
Director, Clinical Research and Heartburn Center
Division of Gastroenterology and Hepatology
Johns Hopkins University School of Medicine
Baltimore, Maryland



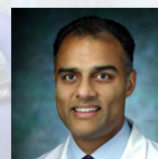
Katherine Norgaard, MD (USA)

Clinical Associate
Anesthesiology and Critical Care Medicine
Johns Hopkins University School of Medicine
Baltimore, Maryland



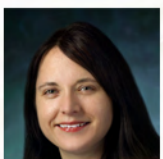
Mary-Rose Hess, BSN, RN, CGRN (USA)

Nurse Manager
Chair, Nurse Physician Procedure Group
The Johns Hopkins Hospital
Baltimore, Maryland



Vikesh Singh, MD, MSc (USA)

Professor of Medicine
Director of Endoscopy, Johns Hopkins Hospital
Director of Pancreatology
Division of Gastroenterology and Hepatology
Johns Hopkins University School of Medicine
Baltimore, Maryland



Margaret Geri Keane, MBBS, MSc (USA)

Assistant Professor of Medicine
Division of Gastroenterology and Hepatology
Johns Hopkins University School of Medicine
Baltimore, Maryland



Eun Ji Shin MD, PhD (USA)

Associate Professor of Medicine
Division of Gastroenterology and Hepatology
Johns Hopkins University School of Medicine
Baltimore, Maryland



Mouen Khashab, MD, MASGE (USA)

Professor of Medicine
Director, Therapeutic Endoscopy
The Johns Hopkins Hospital
Lead, Therapeutic Endoscopy Group
The Johns Hopkins Enterprise
Division of Gastroenterology and Hepatology
Johns Hopkins University School of Medicine
Baltimore, Maryland



Todd Baron, MD, MASGE (USA)
Professor of Medicine
Division of Gastroenterology and Hepatology
Director of Advanced Therapeutic Endoscopy
University of North Carolina
Chapel Hill, North Carolina



**Marc Barthet, MD, PhD, FESGE
Gastroenterologist (FRANCE)**
Gastroenterologist
Head, Endoscopy and Gastroenterology Department
Hôpital Nord, Marseille
Marseille, France



**Diogo Turiani Hournaux De Moura, MD,
MSc, PhD, Post-PhD (Brazil)**
Associate Professor - Gastroenterology Department
University of São Paulo
President of the Bariatric Endoscopy Division
Brazilian Society of Digestive Endoscopy (SOBED)
Co-Director - Bariatric Endoscopy Live Global
São Paulo, Brazil

Peter Draganov, MD (USA)
UF Health Digestive Disease Specialists
UF Health Endoscopy Center
UF Health Shands Endoscopy Suite
University of Florida Health
Gainesville, Florida



Robert Hawes, MD (USA)
Professor of Medicine
University of Central Florida College of Medicine
Medical Director
Center for Advanced Endoscopy, Research and
Education (CARE)
Orlando Health Digestive Health Institute
Orlando, Florida



Shayan Irani, MD (USA)
Gastroenterologist
Virginia Mason Franciscan Health
Seattle, Washington



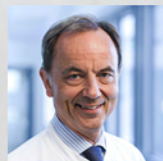
**Sundeep Lakhtakia, MD, MNAMS, DM,
FSGEI, FASGE, FACG, FJGES (India)**
Director, Endoscopy and EUS
Asian Institute of Gastroenterology, AIG Hospitals
President, Society of Gastrointestinal Endoscopy of
India (SGEI)
Vice-Chair, International Committee
The American Society for Gastrointestinal Endoscopy
(ASGE)
Steering Committee Member, Asian EUS Group
Andhra Pradesh, India



**Fauze Maaluf-Filho, MD, PhD, FASGE
(Brazil)**
Associate Professor
Department of Gastroenterology
University of São Paulo
Director of Endoscopy Unit
Cancer Institute of São Paulo - ICESP
International Editor for *Gastrointestinal Endoscopy*
São Paulo, Brazil



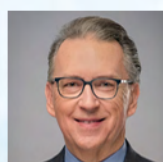
Amit Maydeo, MD, MS, FASGE (India)
Chairman, Baldota Institute of Digestive Sciences
(BIDS)
Global Hospital
Emeritus Professor, Department of Surgery
Seth GS Medical College
Mumbai, India



Horst Neuhaus, MD (Germany)
Associate Professor
Medical Faculty of the Technical University Munich
Chief, Department of Internal Medicine
Evangelisches Krankenhaus Düsseldorf
University of Düsseldorf
Düsseldorf, Germany



**D. Nageshwar Reddy, MD, DM, DSc,
FAMS (India)**
Chief, Gastroenterology and Therapeutic Endoscopy
Chairman, Asian Institute of Gastroenterology
and AIG Hospitals
Asian Institute of Gastroenterology
Hyderabad, India



Douglas Rex, MD (USA)
Distinguished Professor Emeritus of Medicine
Indiana University School of Medicine
Indianapolis, Indiana



Vanessa Shami, MD (USA)
Professor of Medicine
University of Virginia Digestive Health System
Section Chief of Interventional Endoscopy
Charlottesville, Virginia

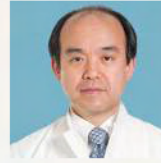


**Uzma Siddiqui, MD, FASGE, FACG,
FJGES (USA)**
Professor of Medicine
Director, Endoscopic Ultrasound and Advanced
Endoscopy Training Program
Associate Director, Center for Endoscopic Research
and Therapeutics (CERT)
Chicago, Illinois

Guest Speakers



Christopher Thompson, MD, MSc, FASGE, FACG, AGAF, FJGES (USA)
Professor of Medicine
Harvard Medical School
Director of Endoscopy
Brigham and Women's Hospital
Advanced Endoscopy Fellowship Program Director
Clinical Faculty, Boston Children's Hospital and
the Dana-Farber Cancer Institute
Boston, Massachusetts



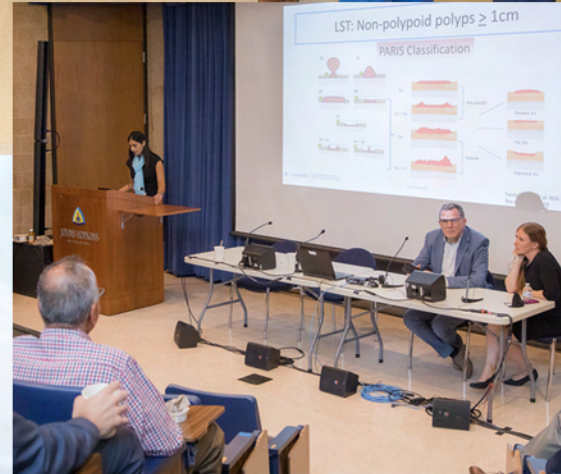
Naohisa Yahagi MD, PhD (Japan)
Professor of Medicine
Director, Division of Research and Development
Minimally Invasive Treatment
Cancer Center
Keio University School of Medicine
Tokyo, Japan



Mihir Wagh, MD (USA)
Professor of Medicine and Gastroenterology
University of Colorado
Anschutz Medical Campus



Linda Zhang, MBBS (Australia)
Staff Specialist
Division of Gastroenterology and Hepatology
St. George Hospital
Sydney, Australia



Thursday August 24, 2023

- 9:00 – 9:45 am** Registration and Continental Breakfast
- 9:45 – 10:00 am** Welcome and Introduction
Moderators: Robert Hawes, MD, Horst Neuhaus, MD, Naohisa Yahagi, MD, PhD, Vikesh Singh, MD, MSc and Linda Zhang, MD
- 10:00 - 10:30 am** **Electrosurgical Innovations in Therapeutic Endoscopy**
 Horst Neuhaus, MD
 Sponsored by Erbe USA
This session is not eligible for AMA PRA Category 1 Credit™
- 10:30 - 11:00 am** **Endoscopic Resection and Hemostasis**
 Mihir Wagh, MD
 Sponsored by Olympus America, Inc.
This session is not eligible for AMA PRA Category 1 Credit™
- 11:00 - 11:30 am** **Utility of Lumen Apposing Stents**
 Shayan Irani, MD
 Sponsored by Boston Scientific Inc.
This session is not eligible for AMA PRA Category 1 Credit™
- 11:30 - 12:00 pm** **Innovations in ESD Traction**
 Peter Draganov, MD
 Sponsored by Fujifilm Healthcare Americas Corporation
This session is not eligible for AMA PRA Category 1 Credit™
- 12:00 – 1:00 pm** Lunch and Exhibits
- 1:00 – 5:00 pm** Physician Hands-on Training and Nursing Track (see page 11)

Station # 1: ESD 1

Faculty trainers: Saowanee Ngamruengphong, MD and Naohisa Yahagi, MD, PhD

Station # 2: ESD 2

Faculty trainers: Peter Draganov, MD and Saowanee Ngamruengphong, MD

Station # 3: POEM 1

Faculty trainers: Mark Barthet, MD, PhD and Horst Neuhaus, MD

Station # 4: POEM 2

Faculty trainers: Mark Barthet, MD, PhD and Uzma Siddiqui, MD, MASGE, FACG, FJGES

Station # 5: Defect Closure and Suturing 1

Faculty trainers: Mihir Wagh, MD and Olaya Brewer Gutierrez, MBBS and Diogo De Moura, MD, MSc, PhD

Station # 6: Defect Closure and Suturing 2

Faculty trainers: Robert Hawes, MD, Raghid Bitar, MD and Margaret Geri Keane, MBBS, MSc

Station # 7: EMR and Hemostasis

Faculty trainers: Venkata Akshintala, MD, Vanessa Shami, MD and Eun Ji Shin MD, PhD

Station # 8: Interventional EUS

Faculty trainers: Todd Baron, MD, MASGE and Shayan Irani, MD

Friday August 25, 2023

- 6:30 - 7:20 am** Registration and Continental Breakfast
- 7:20 - 7:30 am** Welcome and Introduction
- Forum 1** **Moderators:** Robert Hawes, MD, Todd Baron, MD, MASGE, Horst Neuhaus, MD, Vanessa Shami, MD and Vikesh Singh, MD, MSc
- 7:30 - 7:50 am** **Stone Management**
 Robert Hawes, MD
 Sponsored by Olympus America, Inc.
This session is not eligible for AMA PRA Category 1 Credit™
- 7:50 - 8:10 am** **What's Cool About Cryo?**
 Marcia Canto, MD, MHS
 Sponsored by Pentax Medical
This session is not eligible for AMA PRA Category 1 Credit™
- 8:10 - 8:30 am** **Endoscopic Vacuum Therapy - Paradigm Shift**
 Diogo De Moura, MD, MSc, PhD
- 8:30 - 8:40 am** Questions and Answers
- 8:40 – 10:10 am** **Live Endoscopy Session 1**
Case 1 Hyderabad, India
 D. Nageshwar Reddy, MD, DM, DSc, FAMS
- Case 2 Mumbai, India**
 Amit Maydeo, MBBS, FASGE
- Case 3: The Johns Hopkins Hospital**
 Mouen Khashab, MD, MASGE and Shayan Irani, MD
- Case 4: Hyderabad, India**
 Sundeep Lakhtakia, MD, MNAMS, MD, FSGEI, ASGE, FACG, FJCES
- 10:10 - 10:30 am** Break and Exhibits
- Forum 2** **Moderators:** Diogo De Moura, MD, MSc, PhD, Peter Draganov, MD, Vanessa Shami, MD, Mihir Wagh, MD and Vikesh Singh, MD, MSc
- 10:30 – 12:00 pm** **Live Endoscopy Session 2**
Case 1: Johns Hopkins Hospital
 Naohisa Yahagi, MD, PhD and Saowanee Ngamruengphong, MD
- Case 2: Johns Hopkins Hospital**
 Mouen Khashab, MD, MASGE and Marc Barthet, MD, PhD
- Case 3: Johns Hopkins Hospital**
 Marcia Canto, MD, MHS and Uzma Siddiqui, MD, MASGE, FACG, FJGES
- Case 4: Sao Paulo, Brazil**
 Fauze Maaluf-Filho, MD, PhD, FASGE



Continued next page -

Friday August 25, 2023 - Continued

12:00 – 12:30 pm Break and Exhibits

Forum 3 Moderators: Todd Baron, MD, MASGE, Shayan Irani, MD, Robert Hawes, MD, Uzma Siddiqui, MD, MASGE, FACG, FJGES and Mihir Wagh, MD

12:30 – 1:10 pm Lunch/Symposium

12:30 - 12:50 pm **EMR and ESD Defect Closure**
Peter Draganov, MD
Sponsored by Micro-Tech Endoscopy
This session is not eligible for AMA PRA Category 1 Credit™

12:50 - 1:10 pm **Exploration of Defect Closure**
Mihir Wagh, MD
Sponsored by Boston Scientific/Apollo
This session is not eligible for AMA PRA Category 1 Credit™

1:10 - 1:40 pm Break and Exhibits

1:40 - 3:15 pm **Live Endoscopy Session 3**
Case 1: The Johns Hopkins Hospital
Saowanee Ngamruengphong, MD, Peter Draganov, MD and Naohisa Yahagi, MD, PhD

Case 2: Indianapolis, Indiana
Douglas Rex, MD, MASGE

Case 3: Johns Hopkins Hospital
Mouen Khashab, MD, MASGE, Horst Neuhaus, MD and Marc Barthet, MD, PhD

Case 4: Brigham and Women's Hospital
Christopher Thompson, MD, MSc, FASGE, FACG, AGAF, FJGES

3:15 - 3:30 pm Break and Exhibits

Forum 4 Moderators: Peter Draganov, MD, Robert Hawes, MD, Shayan Irani, MD, Horst Neuhaus, MD, Raghid Bitar, MD and Uzma Siddiqui, MD, MASGE, FACG, FJGES

3:30 – 5:00 pm **Live Endoscopy Session 4**
Case 1: The Johns Hopkins Hospital
Todd Baron, MD, MASGE, Vikesh Singh, MD, MSc and Mouen Khashab, MD, MASGE
Case 2: Indianapolis, Indiana
Douglas Rex, MD, MASGE
Case 3: The Johns Hopkins Hospital
Eun Ji Shin MD, PhD and Vanessa Shami, MD
Case 4: The Johns Hopkins Hospital
Margaret Geri Keane, MBBS, MSc, Diogo De Moura, MD, MSc, PhD and Olaya Brewer Gutierrez, MBBS

5:00 pm Closing Remarks/Adjourn

This schedule is subject to change.



Thursday, August 24, 2023

1:00 – 5:00 pm

Johns Hopkins Faculty

Sarah Ashwood, BSN, RN
 Shamarla Bates, Clinical Technician
 Marcy Brewer, BSN, RN
 Brittany Craven, BSN, RN
 Regina Crowell, BSN, MAS, RN
 Ahmed El-Agamy, MB Bch, MBA
 Denise Frank, Clinical Technician
 Caroline French, BSN, RN

Rose Fusco, BSN, RN, CGRN
 Cathy Garrett, BSN, RN, CGRN
 Mary-Rose Hess, BSN, RN, CGRN
 Shanshan Huang, MBA
 Linda Hyland, BS, RN
 Edward Johnston MAS, BSN, RN, NHDP-BC
 Aneesha Linder, MSN, RN

Tyree McAllister, Clinical Technician
 Laurie McClelland, BSN, RN, CGRN
 Kaitlin Mickens, Clinical Technician
 Libbie Monroe, BSN, RN, CGRN
 Nilda Texidor-Murray, RN
 Tanya Valdez, BSN, RN
 Sara Weinheimer, BSN, RN
 Christina Wendel, BSN, RN

Nursing Track Goals

At the conclusion of these activities and lectures, participants will be able to:

- Establish a comprehensive clinical education program for the integration of new products and procedures into your endoscopy practice.
- Develop a variety of resources and educational pathways to meet individualized learning needs for advanced therapeutic endoscopy staff.
- Give examples of advanced endoscopic procedures and identify the equipment and accessories involved.
- Discuss methods to maintain clinical competencies while fostering a supportive learning environment that builds staff confidence and improves overall performance.
- Discuss quality improvement project methods to meet your endoscopy centers utilization and workflow goals.

1:00 – 1:10 pm **Welcome**
 Ahmed El-Agamy, MB Bch, MBA and
 Libbie Monroe, BSN, RN, CGRN

1:10 – 1:15 pm **Lecture Introductions**
 Cathy Garrett, BSN, RN, CGRN and
 Laurie McClelland, BSN, RN, CGRN

** Participants will rotate between stations every 30 minutes*

SESSION 1: Lectures

1:15 – 1:55 pm **How to Safely Introduce New Products and Procedures into your Practice**
 Mary-Rose Hess, BSN, RN, CGRN

1:55 – 2:40 pm **How to Improve your Workflow and Utilization: Every Minute Counts**
 Shanshan Huang, MBA

SESSION 2: Hands-On Stations

2:40 – 2:50 pm **Station Introductions**
 Aneesha Linder, MSN, RN and
 Libbie Monroe, BSN, RN, CGRN

2:50 – 3:20 pm **A Stitch in Time, Close it Up: Endoscopic Suturing and Clips**
 Sarah Ashwood, BSN, RN, Kaitlin Mickens,
 Nilda Texidor-Murray, RN and Tanya Valdez, BSN, RN

3:20 – 3:50 pm **50 Shades of Red: Stop that Bleed**
 Marcy Brewer, BSN, RN, Brittany Craven, BSN, RN,
 Tyree McAllister and Christina Wendel, BSN, RN

3:50 – 4:20 pm **The Land Down Under - Resection EMR and ESD**
 Regina Crowell, BSN, MAS, RN, Denise Frank,
 Rose Fusco, BSN, RN, CGRN and Edward Johnston
 MAS, BSN, RN, NHDP-BC

4:20 – 4:50 pm **Recipes for Success: Name that Stent**
 Shamarla Bates, Cathy Garrett, BSN, RN, CGRN,
 Taylor Hutter, RN, BSN, CCRN and Linda Hyland, BS, RN

4:50 – 5:00 pm **Closing Statements with Questions and Answers**
 Mary-Rose Hess, BSN, RN, CGRN

Meet the Nursing Leadership Education Team - "Take a Stroll Through Transverse Alley"

Emergent Call Cart: Sarah Ashwood, BSN, RN and Christina Wendel, BSN, RN

Education Tower: Linda Hyland, BS, RN and Sara Weinheimer, BSN, RN

Data Analysis Board: Ahmed El-Agamy, MB Bch, MBA

Nurse Physician Procedure Group: Marcy Brewer, BSN, RN

Standard of Care: Edward Johnston MAS, BSN, RN, NHDP-BC and Tanya Valdez, BSN, RN

Pulmonary Corner: Caroline French, BSN, RN

