

# CONTINUING MEDICAL EDUCATION

Johns Hopkins School of Medicine  
Division of Gastroenterology and Hepatology  
Present



**REGISTER NOW**

Johns Hopkins School of Medicine  
Thomas B. Turner Building  
Baltimore, Maryland, USA

With main conference lectures and live endoscopy sessions available via live stream!

*This activity has been approved for AMA PRA Category 1 Credits™.*

**Ninth Annual**

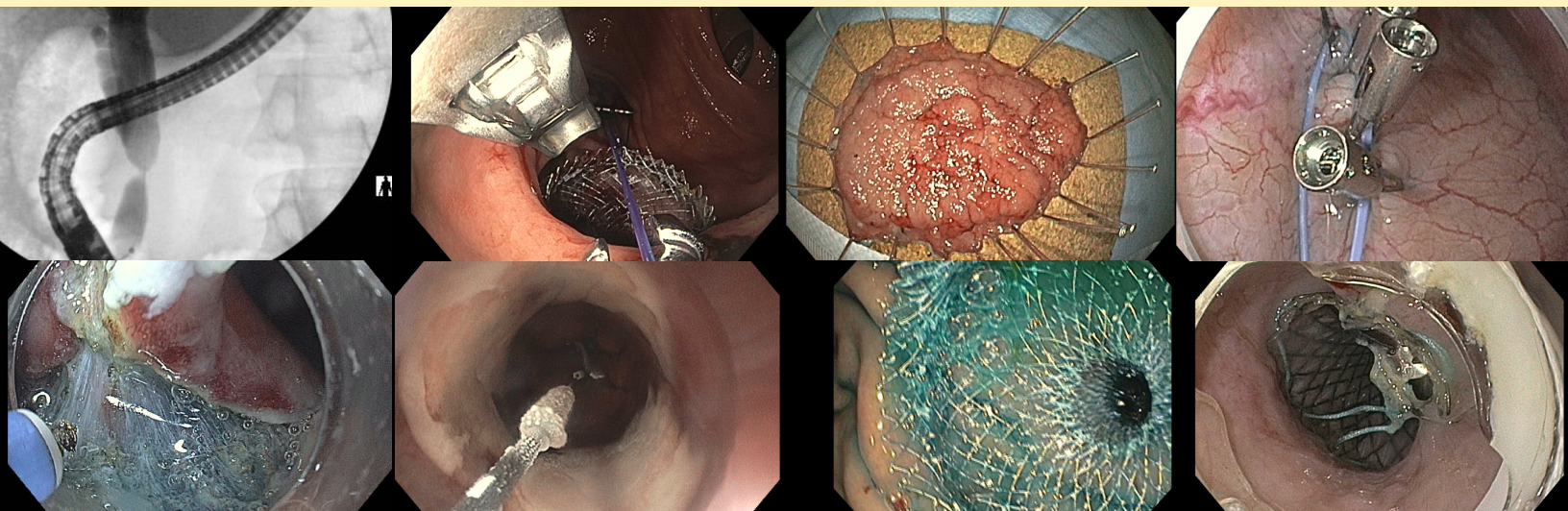
# HITEC

Hopkins International  
Therapeutic Endoscopy Course **2025**

## October 2-3, 2025

Course Directors:

Mouen Khashab, MD, MASGE  
Saowanee Ngamruengphong, MD  
Mary-Rose Hess, BSN, RN, CGRN



**JOHNS HOPKINS**  
MEDICINE

- Comprehensive **2-day hybrid course** (in-person attendance with an option of virtual participation of lectures and live demonstrations) dedicated to providing practicing gastroenterologists, endoscopists and endoscopy staff state-of-the-art updates on luminal and pancreatico-biliary diseases and endoscopy.
- HITEC is the **third highest attended course in the U.S.** after DDW and ACG.
- **Hands-on Training** in advanced endoscopic procedures.
- The course is consistently attended by Physicians from more than 100 countries.
- Two days of **Live Endoscopy** from Johns Hopkins and other centers of excellence around the world with live **Spanish translation** and **AI Closed Caption [CC]** available in different languages.
- Free registration for world-wide audience (**additional fees apply when registering for in-person attendance**).
- Concurrent **GI Nurses and Associates' Course**, and new this year – **Fellow's Course**.
- Course faculty includes the **best educators and leaders** around the world.
- Combination of live endoscopy, short didactic presentations, interactive discussions, and interactive video case presentations.

In short, **HITEC 2025** will feature a detailed illustration of the optimal techniques to enhance endoscopic skills for the management of various luminal and pancreatico-biliary diseases, and concurrently introducing advanced and novel procedures/techniques to trainees, fellows, endoscopy nurses and technicians from around the world. We look forward to your participation.



## DESCRIPTION

The Ninth Annual Hopkins International Therapeutic Endoscopy Course (HITEC) is an intense two-day course dedicated to providing the practicing endoscopist state-of-the-art updates in luminal, pancreaticobiliary and bariatric endoscopy. In addition to extensive live endoscopy demonstrations and keynote lectures by renowned national and international faculty, our unique format will include faculty led industry symposia focusing on the numerous aspects of therapeutic endoscopy and medical management of various GI and pancreaticobiliary disease. This unique course, featuring global endoscopists, will ensure detailed and comprehensive illustration of optimal techniques to enhance endoscopic skills, while simultaneously introducing advanced and novel procedures/techniques to endoscopists.

## WHO SHOULD ATTEND

This activity is intended for endoscopists, gastroenterologists, surgeons, gastroenterology/surgical fellows, endoscopy nurses, endoscopy technicians, physician assistants, nurse practitioners and nurses.

## OBJECTIVES

After attending this activity, the learner will demonstrate the ability to:

- Master techniques in formulating strategies for preserving clinical competencies, creating a supportive learning environment that enhances staff confidence, and ultimately enhances overall performance.
- Gain proficiency in providing examples of advanced endoscopic procedures, and identify the specific equipment and accessories associated with each procedure.
- Develop the ability to create a variety of resources and educational pathways, tailored to address the individualized learning needs of advanced therapeutic endoscopy staff.
- Acquire needed skills to apply quality improvement project methods tailored to meet the utilization and workflow goals of their endoscopy center.
- Enhance preparedness with best practices to establish a comprehensive clinical education program designed to seamlessly integrate new products and procedures into their endoscopy practice.

## ACCREDITATION STATEMENT

The Johns Hopkins University School of Medicine is accredited by the Accreditation Council for Continuing Medical Education (ACCME) to provide continuing medical education for physicians.



## CREDIT DESIGNATION STATEMENT

The Johns Hopkins University School of Medicine designates this live activity for a maximum of **12 AMA PRA Category 1 Credits™**. Physicians should claim only the credit commensurate with the extent of their participation in the activity.

## POLICY ON PRESENTER AND PROVIDER DISCLOSURE

It is the policy of the Johns Hopkins School of Medicine that the presenter and provider globally disclose conflicts of interest. The Johns Hopkins School of Medicine OCME has established policies in place to identify and mitigate relevant conflicts of interest prior to this educational activity. Detailed disclosure will be made prior to presentation of the education.

## OTHER CREDITS

**American Nurses Credentialing Center (ANCC)** accepts *AMA PRA Category 1 Credit™* from organizations accredited by the ACCME.

**American Academy of Nurse Practitioners National Certification Program** accepts *AMA PRA Category 1 Credit™* from organizations accredited by the ACCME.

PAs may claim a maximum of 12 Category 1 credits for completing this activity. **NCCPA** accepts *AMA PRA Category 1 Credit™* from organizations accredited by ACCME or a recognized state medical society.



## MAINTENANCE OF CERTIFICATION

Successful completion of this CME activity, which includes participation in the evaluation component, enables the participant to earn up to 12 MOC points in the American Board of Internal Medicine's (ABIM) Maintenance of Certification (MOC) program. It is the CME activity provider's responsibility to submit participant completion information to ACCME for the purpose of granting ABIM MOC credit.



## HOW TO OBTAIN CREDIT

Post activity, an online evaluation will be available to attendees to evaluate the activity and individual presentations and to identify future educational needs. Upon completion of the evaluation, the learner must attest to the number of hours in attendance. Credits earned will be added to the learner's transcript and immediately available for print. **The last day to access the evaluation and attest to your credits is November 17, 2025.**

An outcome survey will be sent to all physician attendees within two months post activity to assist us in determining what impact this activity had on the learner's practice.

## AMERICANS WITH DISABILITIES ACT

The Johns Hopkins School of Medicine fully complies with the legal requirements of the ADA and the rules and regulations thereof. *Please notify us if you have any special needs.*

## ACKNOWLEDGEMENT

Applications for commercial support from health care related industries are pending. A complete list of contributors will be provided in the syllabus. Please note that commercial support received is solely for the educational component of the activity and will not be used to provide food and beverage.

Please note: The Physician Payments Sunshine Act was enacted by Congress to increase public awareness of financial relationships between drug and medical device manufacturers and physicians. In compliance with the requirements of this Act, the commercial supporter/s of this activity may require the Johns Hopkins School of Medicine to report certain professional information (such as name, address, National Provider Identifier (NPI), and State License number) of physician attendees who receive complimentary food and beverage in conjunction with a CME activity. The commercial supporter is required to submit the collected data to the Centers for Medicare and Medicaid Services which will then publish the data on its website.



## REGISTER ONLINE

<https://hopkinscme.cloud-cme.com/aph.aspx?P=5&EID=58305>

## ON-SITE REGISTRATION

Thursday, October 2, 2025 - 7:30 a.m. - 8:00 a.m.

Friday, October 3, 2025 - 6:50 a.m. - 7:30 a.m.

All attendees, including nurses and fellows, should plan to attend the main course on Thursday and Friday. The hands-on sessions are geared towards each of these intended audiences and will take place in close proximity. The registration desk will be open all day.

The Turner Building is located on Rutland Avenue at Monument Street. Directions and campus parking information are available on our website under the Contact Us tab at <https://HopkinsCME.cloud-cme.com>. Handicapped parking is available in the nearby Rutland Garage. Johns Hopkins is smoke-free.

## HOTEL AND TRAVEL INFORMATION

### Residence Inn Baltimore at the Johns Hopkins Medical Campus

Phone: +1 (443) 524-8400

800 North Wolfe Street, Baltimore, Maryland 21205

Website: [www.marriott.com](http://www.marriott.com) Click [here](#) to book!

**Hotel Reservation Cut-Off Date: September 17, 2025**

The Residence Inn Baltimore is located on the Johns Hopkins Medical Campus. Make your reservation online or by calling the hotel directly and specify that you are attending the Johns Hopkins **HITEC** Conference to receive the special group rate of \$169 for one bedroom king suite, plus tax. On-site valet parking is available at the hotel at an additional charge. Check-in time is 4:00 p.m. Check-out time is 12:00 p.m. This hotel is located directly across the street to the meeting site, within walking distance.

## TRAVEL INFORMATION

**By Air:** Baltimore is served by three major airports: Baltimore/Washington International Airport (BWI) in Maryland; Washington Dulles International Airport (IAD) and Ronald Reagan National Airport (DCA) in Northern Virginia.

**Taxi Service:** To downtown Baltimore from BWI, the nearest airport, is 15-30 minutes depending on traffic and approximately \$50 one way. Super Shuttle charges less than \$20 one way and reservations are needed.

Reservations can be made online at: [www.supershuttle.com](http://www.supershuttle.com) or call +1 (410) 859-3427.

**By Rail:** Baltimore is easily accessible by train. Amtrak trains run 24 hours a day, 7 days a week. Baltimore is a major stop for Amtrak's high-speed Acela Express service. Penn Station is easily accessible by I-95, I-83 and I-70 and is a 15 minute taxi ride to Johns Hopkins. For more information visit [www.amtrak.com](http://www.amtrak.com) or call +1 (800)USA-RAIL.

## Ground Transportation

You can request a ride on any day and at any time with Uber or Lyft in Baltimore.

## LOCATION

### Thomas B. Turner Building

Johns Hopkins School of Medicine

720 Rutland Avenue

Baltimore, Maryland 21205



## SYLLABUS

The syllabus will be accessible online and via your mobile device in the CloudCME App prior to the activity. An email reminder will be sent.

## VIRTUAL LEARNERS

Lectures and live endoscopy sessions will be accessible via Zoom. The Zoom webinar link will be accessible online and via your mobile device in the CloudCME App one week prior to the activity startdate. An email reminder will be sent. To access, please visit our website: CME Website: <https://hopkinscme.cloud-cme.com> (Sign In, Click My CME tab, Click Syllabus)

## FEES

Registration Cut-Off Date: **September 26, 2025 5:00 p.m. EST**

	Before August 1, 2025	After August 1, 2025
<b>IN-PERSON ATTENDEE (Thursday and Friday)</b>		
Physician: In-Person Course Only	<b>\$250</b>	<b>\$300</b>
Physician: In-Person Course with Hands-On	<b>\$400</b>	<b>\$450</b>
Physician in Training / Non-Physician Health Professional: In-Person Course Only	<b>\$100</b>	<b>\$150</b>
Physician in Training / Non-Physician Health Professional: In-Person Course with Hands-On	<b>\$200</b>	<b>\$250</b>
Nursing Track: In-Person with Hands-On	<b>\$100</b>	<b>\$150</b>
Fellows Track: In-Person with Hands-On	<b>accepted applicants will be given a promo code to register with</b>	<b>accepted applicants will be given a promo code to register with</b>
Industry Partners	<b>\$200</b>	<b>\$250</b>
<b>VIRTUAL ATTENDEE</b>		
VIRTUAL ATTENDEE (Thursday & Friday Lectures & Live Endo.)	<b>FREE</b>	<b>FREE</b>

**Methods of Payment:** Learners must register and submit full payment prior to the start of the activity. On-site payments can only be accepted if made by learners via credit card through the online portal by 5:00 p.m. ET on the first day of the activity. The registration fee includes instructional materials, continental breakfasts, refreshment breaks and lunches.

You will receive a confirmation by e-mail. If you have not received it by **September 26, 2025**, call (410) 502-9636 to confirm that you are registered. A transcript of attendance will be available upon attestation of your credit hours and submission of the post activity online evaluation.

The Johns Hopkins University reserves the right to cancel or postpone any activity due to unforeseen circumstances. In this event, the University will refund the registration fee but is not responsible for travel expenses. Additionally, we reserve the right to change the venue to a comparable venue. Under such circumstances registrants will be notified as soon as possible.

## LATE FEE AND REFUND POLICY

A \$50 late fee applies to registrations received after 5:00 p.m. ET on **September 26, 2025**. A handling fee of \$50 will be deducted for cancellation. An additional fee may apply for cancellation of other events, including workshops and social activities. Refund requests must be received by fax or mail by **September 26, 2025**. No refunds will be made thereafter. Transfer of registration to another Johns Hopkins activity in lieu of cancellation is not possible.

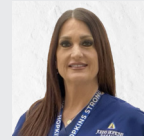




**Mouen Khashab, MD, MASGE**  
Professor of Medicine  
Director, Therapeutic Endoscopy  
The Johns Hopkins Hospital  
Lead, Therapeutic Endoscopy Group  
The Johns Hopkins Enterprise  
Division of Gastroenterology and  
Hepatology  
Johns Hopkins University School of  
Medicine  
Baltimore, Maryland



**Saowanee Ngamruengphong, MD**  
Associate Professor of Medicine  
Associate Director, Gastroenterology  
and Hepatology Fellowship  
Division of Gastroenterology and  
Hepatology  
Johns Hopkins University School of  
Medicine  
Baltimore, Maryland



**Mary-Rose Hess, BSN, RN, CGRN**  
Endoscopy Nurse Manager  
Advanced Therapeutic Nurse  
The Johns Hopkins Hospital  
Baltimore, Maryland

## JOHNS HOPKINS FACULTY



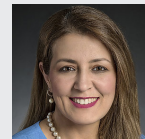
**Venkata Akshintala, MD**  
Associate Professor of Medicine  
Program Director, Medical Pancreatology  
Program Director, Therapeutic Endoscopy  
Fellowship



**Anthony Kalloo, MD**  
Professor of Medicine



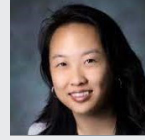
**Marcia Canto, MD, MHS**  
Professor of Medicine and Oncology  
Director, Clinical Research and Heartburn  
Center



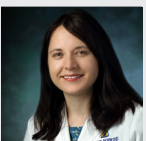
**Zahra Maleki, MD, FCAP, MIAC**  
Associate Professor of Pathology



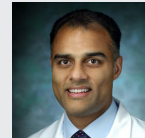
**Olaya Brewer Gutierrez, MBBS**  
Assistant Professor of Medicine



**Eun Ji Shin MD, PhD**  
Associate Professor of Medicine

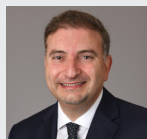


**Margaret Geri Keane, MBBS, MSc**  
Assistant Professor of Medicine



**Vikesh Singh, MD, MSc**  
Professor of Medicine  
Director of Endoscopy  
Director of Pancreatology





**Mohamad A. Al-Haddad, MD, MSc, FASGE (USA)**  
Professor of Medicine  
Director of the Division of Gastroenterology and Hepatology  
Indiana University School of Medicine  
Indianapolis, Indiana



**Mustafa Arain, MD (USA)**  
Director, Pancreas Center  
Center for Interventional Endoscopy  
Advent Health  
Orlando, Florida



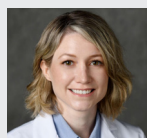
**Torsten Beyna, MD (Germany)**  
Head of Department of Gastroenterology and Interventional Endoscopy  
Department of Gastroenterology,  
Evangelisches Krankenhaus Dusseldorf,  
Dusseldorf  
Nordrhein-Westfalen, Germany



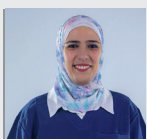
**Kenneth Binmoeller, MD, FACG, MASGE (USA)**  
Chief, Division of Advanced Interventional Endoscopy  
Advanced Organ Therapy Service Line  
Medical Director, Interventional Endoscopy Services  
San Francisco, California



**Yen-I Chen MD, MSc (Canada)**  
Director of Therapeutic Endoscopy  
McGill University Health Centre  
Montreal, QC, Canada



**Natalie Cosgrove, MD (USA)**  
Interventional Endoscopist  
Medical Director of Quality and Safety in Gastroenterology  
Advent Health Orlando Center for Interventional Endoscopy  
Orlando, Florida



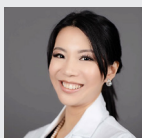
**Shaimaa Elkholy, MD (Egypt)**  
Associate Professor  
Advanced interventional GI Endoscopy  
Faculty of Medicine  
Cairo University  
Cairo, Egypt



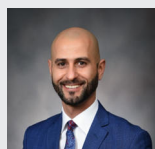
**Aryn Haji, MA, MBBChir, MSc, MD, FRCS (London)**  
Consultant Colorectal and Laparoscopic Surgeon  
Honorary Senior Lecturer KCL  
Clinical Lead for Endoscopy and Colorectal Surgery  
King's College Hospital  
Denmark Hill, London



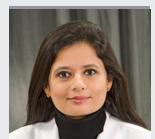
**Joo Ha Hwang, MD, PhD (USA)**  
Professor of Medicine  
Professor of Surgery (by courtesy)  
Director, Gastrointestinal Endoscopic Surgery  
Stanford University  
Stanford, California



**Pichamol Jirapinyo, MD, MPH (USA)**  
Director of Bariatric Endoscopy Fellowship  
Brigham and Women's Hospital  
Assistant Professor of Medicine  
Harvard Medical School  
Boston, Massachusetts



**Manol Jovani, MD, MPH (USA)**  
Associate Professor of Medicine  
Medical Director, Advanced Therapeutic Endoscopy,  
Gastro Health Florida  
Gastroenterology Fellowship Program Director  
FIU School of Medicine  
Miami, Florida



**Shivangi Kothari, MD, FASGE (USA)**  
Associate Professor of Medicine  
Associate Director of Endoscopy  
Center for Advanced Therapeutic Endoscopy  
University of Rochester Medical Center  
Rochester, New York



**Amit Maydeo, MD (India)**  
Chairman  
Institute of Gastrosiences  
Sir HN Reliance Foundation Hospital  
Emeritus Professor, Department of Surgery  
Seth GS Medical College  
Mumbai, India



**Andrew Mertz, MD (USA)**  
Therapeutic and Bariatric Endoscopist  
Brooke Army Medical Center  
San Antonio, Texas





**Jennifer Phan, MD (USA)**

Medical Director, Hoag Irvine Advanced Endoscopy Center  
Director of Bariatric Endoscopy  
Co-Director of the Advanced Endoscopy Fellowship  
Hoag Digestive Health Institute  
Irvine, California



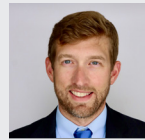
**Alessandro Repici, MD (Italy)**

Professor of Gastroenterology  
Director of Endoscopy  
Humanitas Research Hospital and Humanitas University  
Milan, Italy



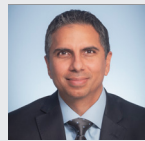
**Doug Rex, MD, MASGE (USA)**

Distinguished Professor Emeritus of Medicine  
Indiana University School of Medicine  
Indianapolis, Indiana



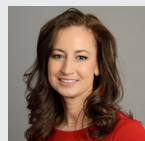
**Andrew C. Storm, MD (USA)**

Associate Professor of Medicine  
Chair of Endoscopy  
Mayo Clinic  
Rochester, Minnesota



**Shyam Thakkar, MD (USA)**

Professor of Medicine  
Director of Advanced Therapeutic Endoscopy  
West Virginia University Medicine  
Morgantown, West Virginia



**Jessica Widmer, DO (USA)**

Associate Professor  
Department of Medicine  
NYU Grossman Long Island School of Medicine  
Chief, Division of Gastroenterology  
NYU Langone Hospital - Long Island  
Program Director, Advanced Endoscopy Fellowship Program  
NYU Langone Hospital- Long Island  
Mineola, New York



All program times listed are in Eastern Standard Time (EST).

### MAIN COURSE

- 7:30 8:00 **Registration and Breakfast**
- 8:00 8:10 **Welcome, Introduction and Conference Goals**  
Mouen Khashab, MD
- 8:10 8:35 **Symposium # 1: LAMS: All You Need to Know**  
Mohammad A. Al-Haddad, MD, MSc, FASGE  
*This session is not eligible for AMA PRA Category 1 Credit™.*  
Sponsored by Boston Scientific Corporation.
- 8:35 9:00 **Symposium # 2: Endoscopic Update: Inventions and Clinical Innovations in Electrosurgery**  
Torsten Beyna, MD  
*This session is not eligible for AMA PRA Category 1 Credit™.*  
Sponsored by ERBE.
- 9:00 –10:45 **Live Endoscopy Session I**
- **Room 1: Humanitas University | Milan, Italy**  
Alessandro Repici, MD
  - **Room 2: Cairo University | Cairo, Egypt**  
Shaimaa Elkholy, MD, PhD
  - **Room 3: Humanitas University | Milan, Italy**  
Alessandro Repici, MD
  - **Room 4: Cairo University | Cairo, Egypt**  
Shaimaa Elkholy, MD, PhD
- 10:45 11:10 **Coffee Break and Visit Exhibits**
- 11:10 11:35 **Symposium # 3: EndoHepatology Today: The Role of EUS**  
Shivangi Kothari, MD, FASGE  
*This session is not eligible for AMA PRA Category 1 Credit™.*  
Sponsored by Olympus.
- 11:35 12:00 **Symposium # 4: Innovative Technologies for POEM and Third Space Endoscopy**  
Joo Ha Hwang, MD, PhD  
*This session is not eligible for AMA PRA Category 1 Credit™.*  
Sponsored by FujiFilm.
- 12:00 1:00 **Lunch and Visit Exhibits**
- 12:15 12:40 **Symposium # 5: Advances in ERCP and Cholangiopancreatography**  
Natalie Cosgrove, MD  
*This session is not eligible for AMA PRA Category 1 Credit™.*  
Sponsored by Medtronic.



### 1:00 5:15 HANDS-ON SESSION

#### MAIN COURSE

- Station # 1:** ESD 1  
(Faculty trainers: Hwang, Ngam)
- Station # 2:** ESD 2  
(Faculty trainers: Haji, Ngam)
- Station # 3:** POEM 1  
(Faculty trainers: Jovani, Khashab)
- Station # 4:** POEM 2  
(Faculty trainers: Brewer, Khashab)
- Station # 5:** Defect Closure and Suturing 1  
(Faculty trainers: Storm, Keane)
- Station # 6:** Defect Closure and Suturing 2  
(Faculty trainers: Mertz, Keane)
- Station # 7:** EMR and Hemostasis  
(Faculty trainers: Canto, Shin)
- Station # 8:** Stenting  
(Faculty trainers: Beyna, Akshintala)
- Station # 9:** Interventional EUS  
(Faculty trainers: Binmoeller, Akshintala)
- Station # 10:** Spray Cryotherapy  
(Faculty trainer: Kothari)
- Station # 11:** New Technology  
[Visit station #11]

### 3:05 3:10 Break

### 1:00 5:15 FELLOWS COURSE

#### HANDS-ON SESSION

*This session is not eligible for AMA PRA Category 1 Credits™*

#### Hands-on Training for Fellows

- Station # 1:** EMR and Hemostasis  
(Faculty trainers: Phan, Shin)
- Station # 2:** ESD  
(Faculty trainers: Al Haddad, Ngam)
- Station # 3:** Defect Closure and Suturing  
(Faculty trainers: Widmer, Keane)
- Station # 4:** Interventional EUS  
(Faculty trainers: Chen, Singh)
- Station # 5:** Luminal Stenting  
(Faculty trainers: Cosgrove, Singh)

### 3:00 3:25 Break [Visit station #11]

### 1:00 5:10 NURSING TRACK

#### HANDS-ON SESSION

See next page 13 for complete nursing track afternoon agenda.

### 5:15 – 6:15 SOCIAL HOUR

Optional Cocktail Hour to Meet and Greet the HITEC Faculty Team. Hors d'oeuvres and drinks will be served.

See Next Page for Nursing Track, Fellows Track and Page 14 for (Friday's) Agenda.

## ADVANCED THERAPEUTIC NURSING TRACK

All program times listed are in Eastern Standard Time (EST).

HITEC  
2025

## NURSING TRACK: AFTERNOON SESSION

## Session 1

- 1:00 1:05 **Welcome, Introduction and Conference Goals**  
Laurie McClelland, BSN, RN, CGRN and  
Cathy Garrett, BSN, RN, CGRN
- 1:05 1:25 **Streamlining Your Practice: Safely Integrating New Products, Procedures and Workflows**  
Mary-Rose Hess, BSN, RN, CGRN,  
Endoscopy Nurse Manager,  
Libbie Monroe, BSN, RN, CGRN,  
Shanshan Huang, MBA Operation Manager  
Business Analytics and Clinical Data Program  
Manager, Regina Crowell, MAS, RN
- 1:25 1:45 **POEM – The Different Versions of Per Oral Endoscopic Myotomy**  
Tanya Valdez, BSN, RN and  
Sophia Parasio, BSN, RN
- 1:45 2:05 **Current Treatment Options for Barrett's Esophagus**  
Hilary Cosby, BSN, RN, CGRN, Senior  
Research Nurse Coordinator
- 2:05 2:25 **ERCP for Patients with Altered Upper GI Anatomy**  
Brittany Craven, BSN, RN and  
Danielle Aluisi, BSN, RN
- 2:25 2:45 **Endoscopic Removal of Lesions by ESD, EFTR, and STER**  
Rosa Fusco, BSN, RN, CGRN and  
Sarah Geer, BSN, RN
- 2:45 2:55 **Refreshment Break**

## Session 2 NURSING TRACK HANDS-ON STATIONS

- 2:55 – 3:00 **Station Introductions**  
Libbie Monroe, BSN, RN, CGRN and  
Regina Crowell, MAS, BSN, RN
- 3:00 – 3:30 **Station 1: Endoscopic Suturing**  
Sarah Geer, BSN, RN,  
Kaitlin Mickens, Clinical Technician,  
Edward Johnston, MAS, BSN, RN, and  
Monique Johnson, Clinical Technician
- 3:30 – 4:00 **Station 2: Stop the Bleed**  
Morgan Morela, BSN, RN,  
Asia Jacobs, Clinical Technician,  
Kimberly Earnest, RN, and  
Tyree McAllister, Clinical Technician
- 4:00 – 4:30 **Station 3: Hybrid Argon Plasma Coagulation**  
Christina Wendel, BSN, RN,  
Denise Frank, Clinical Technician,  
Sophia Parasio, BSN, RN, and  
Dicheaker Lilly (Dottie), Clinical Technician
- 4:30 5:00 **Station 4: Name that Stent**  
Stephanie Keil, BSN, RN,  
Shaquana Amwine, Clinical Technician,  
Danielle Aluisi, BSN, RN, and  
Mariah Santos, Clinical Technician
- 5:00 5:10 **Question and Answer Session**  
Libbie Monroe, BSN, RN, CGRN and  
Regina Crowell, MAS, RN
- 5:15 6:15 **SOCIAL HOUR**  
Optional Cocktail Hour to Meet and Greet  
the HITEC Faculty Team. Hors d'oeuvres and  
drinks will be served.



## FELLOWS COURSE

All program times listed are in Eastern Standard Time (EST).

**HITEC**  
2025

*This session is not eligible for AMA PRA Category I Credits™.*

## FELLOWS COURSE: AFTERNOON SESSION

Limited Course - Pre-application required. 20 spots available.

4 Trainees per station; 35 minutes at each station.

Attendance required both days of the course with this separate hands-on training included.

See Page 13 for Friday's agenda.

1:00–1:05 Welcome, Introduction and Conference Goals  
Saowanee Ngamruengphong, MD

1:00 - 2:45 Hands-On Stations  
Station #1: EMR and Hemostasis  
(Faculty trainers: Phan, Canto)

Station # 2: ESD  
(Faculty trainers: Al Haddad, Ngam)

Station #3: Defect Closure and Suturing  
(Faculty trainers: Widmer, Keane)

3:00 - 3:25 Break [Visit station #11]

3:25 - 3:55 Symposium # 6: Pancreaticobiliary Endoscopy:  
Back to the Basics  
Yen-I Chen, MD  
*This session is not eligible for AMA PRA Category I Credit™.*  
Sponsored by Boston Scientific Corporation.

3:55 - 5:15 Hands-on Stations  
Station # 4: Interventional EUS  
(Faculty trainers: Chen, Singh)

Station # 5: Luminal Stenting  
(Faculty trainers: Cosgrove, Singh)

5:15 - 6:15 SOCIAL HOUR  
Optional Cocktail Hour to Meet and Greet the HITEC Faculty Team.  
Hors d'oeuvres and drinks will be served.



## PROGRAM

All program times listed are in Eastern Standard Time (EST).

HITEC  
2025

## MAIN COURSE

6:50	7:30	<b>Registration, Breakfast and Visit Exhibits</b>	12:50	1:10	<b>Symposium # 11: Optimizing GI Operations and Improving Patient Care through Advanced Navigation Strategies</b> Natalie Cosgrove, MD <i>This session is not eligible for AMA PRA Category I Credit™.</i> Sponsored by Sebel.
7:20	7:30	<b>Welcome, Introduction and Conference Goals</b> Mouen Khashab, MD	1:10	1:30	<b>Break and Visit Exhibits</b>
7:30	7:50	<b>Symposium # 7: New Gen Platform for Cholangiopancreatography</b> Torsten Beyna, MD <i>This session is not eligible for AMA PRA Category I Credit™.</i> Sponsored by MicroTech.	1:30	3:00	<b>Live Endoscopy Session Three</b> • <b>Room 1: The Johns Hopkins Hospital</b> Mouen Khashab, MD • <b>Room 2: The Johns Hopkins Hospital</b> Amyr Hajj MA, MBBChir, MSc, MD, FRCS • <b>Room 3: Indiana University</b> Douglas Rex, MD, MASGE • <b>Room 4: West Virginia University</b> Shyam Thakkar, MD
7:50	8:10	<b>Symposium # 8: Refining Techniques for ESD, POEM, and G-POEM: Perspectives on Devices and Imaging</b> Joo Ha Hwang, MD, PhD <i>This session is not eligible for AMA PRA Category I Credit™.</i> Sponsored by Olympus.	3:00	3:15	<b>Break and Visit Exhibits</b>
8:10	9:40	<b>Live Endoscopy Session One</b> • <b>Room 1: The Johns Hopkins Hospital</b> Mouen Khashab, MD • <b>Room 2: The Johns Hopkins Hospital</b> Kenneth Binmoeller, MD, FACG, MASGE • <b>Room 3: Advent Health</b> Mustafa Arain, MD • <b>Room 4: Reliance Foundation Hospital</b> Amit Mydeo, MD	3:15	3:35	<b>Symposium # 12: Precision and Efficiency in Esophageal SEMS: Why TTS (Through-the-Scope) Matters</b> Manol Jovani, MD <i>This session is not eligible for AMA PRA Category I Credit™.</i> Sponsored by M.I.Tech.
9:40	10:10	<b>Break and Visit Exhibits</b>	3:35	5:00	<b>Live Endoscopy Session Four</b> • <b>Room 1: The Johns Hopkins Hospital</b> Torsten Beyna, MD and Eun Ji Shin, MD, PhD • <b>Room 2: The Johns Hopkins Hospital</b> Kenneth Binmoeller, MD, FACG, MASGE • <b>Room 3: The Johns Hopkins Hospital</b> Margaret Geri Keane, MBBS, MSc and Olaya Brewer Gutierrez, MBBS • <b>Room 4: West Virginia University</b> Shyam Thakkar, MD
10:10	10:30	<b>Symposium # 9: Update on Bariatric and Metabolic Endoscopy</b> Andrew C. Storm, MD <i>This session is not eligible for AMA PRA Category I Credit™.</i> Sponsored by Boston Scientific Corporation.	5:00	5:05	<b>Closing Remarks</b> Mouen Khashab, MD and Saowanee Ngamruengphong, MD
10:30	12:00	<b>Live Endoscopy Session Two</b> • <b>Room 1: The Johns Hopkins Hospital</b> Mouen Khashab, MD • <b>Room 2: The Johns Hopkins Hospital</b> Saowanee Ngamruengphong, MD • <b>Room 3: The Johns Hopkins Hospital</b> Marcia Canto, MD, MHS • <b>Room 4: Brigham and Women's Hospital</b> Pichamol Jirapinyo, MD, MPH			<b>Adjourn</b> You will receive an email notification to complete the evaluation form and to attest to the number of hours in attendance. The registration desk will remain open during conference hours.
12:00	1:30	<b>Lunch and Visit Exhibits</b>			
12:30	12:50	<b>Symposium # 10: Utilizing Liquid Nitrogen Spray Cryotherapy to Manage Dysphagia in Esophageal Cancer</b> Shivangi Kothari, MD, FASGE <i>This session is not eligible for AMA PRA Category I Credit™.</i> Sponsored by Steris.			





## TO REGISTER OR FOR FURTHER INFORMATION

Register online: <https://hopkinscme.cloud-cme.com/aph.aspx?P=5&EID=58305>

Register by Phone .....(410) 502-9636  
Register by Fax.....(866) 510-7088  
Confirmation/Certificates/Transcripts.....(410) 502-9636  
General Information.....(410) 955-2959  
E-mail the Office of CME.....[cmenet@jhmi.edu](mailto:cmenet@jhmi.edu)

Follow us on X: [X/HopkinsCME](https://twitter.com/HopkinsCME)

Facebook: [facebook.com/HopkinsCME](https://facebook.com/HopkinsCME)

**CloudCME** 

Check out our mobile app CloudCME.

Organization Code: **HopkinsCME**

For technical assistance with website, CloudCME or credits,  
please visit our tech support help page:

<https://hopkinscme.cloud-cme.com/about/help>

For general information, please visit the activity webpage at <https://hopkinscme.cloud-cme.com/aph.aspx?P=5&EID=58305>

